

[www.wecobatteries.com](http://www.wecobatteries.com)

[www.wecoess.com](http://www.wecoess.com)

WeCo Srl

Viale J.F.Kennedy 113-121  
50038 Scarperia Firenze Italia

WeCo Energy storage LTD  
Building 1, Nr.2 of Zhengda Road, Chukeng,  
Dongkeng District, Dongguan City,  
Guangdong Province, China



# WECCO

Batteries · Inverters · Cabinets



# Catalogue

---

**01**

**Home Energy  
Storage Batteries**

---

**02**

**Home Energy  
Storage Inverters  
And All In One Systems**

---

**03**

**Industrial and  
Commercial Solutions**

---

**04**

**Cloud Services**

---

**05**

**WeCo**

# 01

## Home Energy Storage Batteries.

Technological avant-garde.



# 4K5 Ultra

Refined industrial technique



**WECCO**

## 4K5

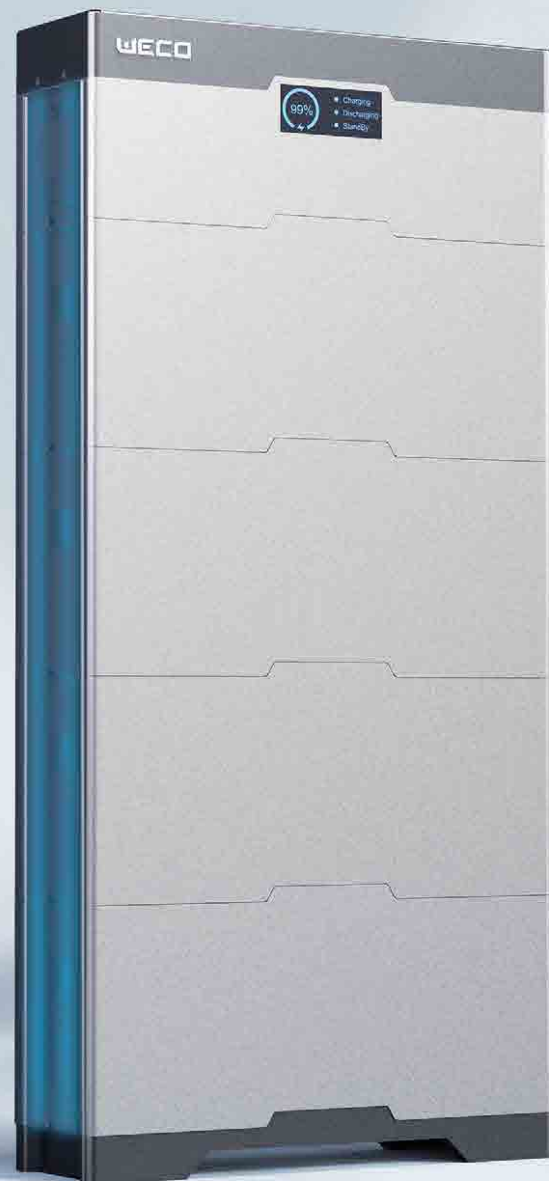
|                         | 4K5 ULTRA-HV                   | 4K5 ULTRA-LV                   |
|-------------------------|--------------------------------|--------------------------------|
| Energy Capacity (kWh)   | 5.12                           | 51.2                           |
| Nominal Voltage (Vdc)   | 450                            | 51.2                           |
| Operation Voltage (Vdc) | 420 ~ 480                      | 45.3 ~ 58.1                    |
| Power (kW)              | 2.5 (Peak 3.5)                 | 5 (Peak 5.5)                   |
| Installation            | Wall Mounted / Stacked         | Wall Mounted / Stacked         |
| IP Rating               | IP54                           | IP54                           |
| Scalability             | Max. 12 in Parallel per System | Max. 15 in Parallel per System |

### Product Features

- The world's thinnest dual voltage li-ion ESS.
- Compact and lightweight with aluminum enclosure.
- Modular design and easy installation.
- Flexibility of low voltage and high voltage application scenarios.
- V-Booster plug and play.
- 10 years warranty.

# 4K0 HV

A simple but technically advanced idea



WECCO

# 4K0 HV

|                          |  |
|--------------------------|--|
| Energy Capacity          | 4.0 kWh @ Single battery module                        |
| Nominal Voltage          | 51.2 Vdc @ Single battery module                       |
| System Capacity          | 12.0~52.0 kWh @ Modules in series                      |
| System Operation Voltage | 134~748 Vdc @ Modules in series                        |
| System Power             | 7.2~31.2 kW @ Modules in series                        |
| IP Rating                | IP55   |
| Scalability              | Max.13 modules per cluster /<br>8 clusters in parallel |

## Product Features

- High energy density and life extended life cycles.
- IP55 outdoor and indoor installation.
- Plug and play modular design.
- Wide voltage range and expandibility.
- Quick and easy installation.
- 10 years warranty/7000cycles.

# 5K0 PRO

Smart Flexible Compact



**WECCO**

# 5K0 PRO

|                                 |   |
|---------------------------------|---|
| <b>Energy Capacity</b>          | 5.12 kWh @ Single battery module                        |
| <b>Nominal Voltage</b>          | 450 Vdc   |
| <b>System Operation Voltage</b> | 400 ~ 480 Vdc   |
| <b>System Capacity</b>          | 5.12 ~ 61.44 kWh @ Modules in parallel                  |
| <b>System Power</b>             | 2.7 ~ 32.4 kW @ Modules in parallel                     |
| <b>IP Rating</b>                | IP65  |
| <b>Scalability</b>              | Max. 12 modules per cluster /<br>8 clusters in parallel |

## Product Features

- Battery module-level optimizer and high energy efficiency.
- Reliable with 5-level safety protection.
- Module-level active balancing.
- Bidirectional isolated DC/DC Booster.
- Easy expansion and high flexibility.
- Simple installation and wide capabilities.
- 10 years warranty/8000 cycles.

# 4K4 LT

A model you can trust,  
with over 300,000 units manufactured



The evolution of the most trusted WeCo battery!

# 4K4 LT

|                   |   |
|-------------------|---|
| Gross Capacity    | 4.7 kWh   |
| Usable Capacity   | 4.4 kWh   |
| Operation Voltage | 46.5 ~ 58.4 Vdc   |
| Power (kW)        | 4.4 (Peak 6.0 kW)   |
| IP Rating         | IP30  |
| Installation      | Wall Mounted / Stackable                                  |
| Scalability       | Max. 15 in Parallel per System<br>(Up to 105 with LV HUB) |

## Product Features

- Pre-charge + MOSFET Protection.
- Three level protection.
- Real-time balancing.
- Wi-Fi and BT available.
- Compatible with the most popular inverters.
- Stack mounted.
- 10 years warranty/6000 cycles.



# 5K3 XP Dual Voltage

Innovative features have rewritten the rules of the ESS segment



WeCo's best-selling battery for domestic and C&I in 2022

# 5K3-XP-EU

|   |                          |
|---|--------------------------|
| Energy Capacity                         | 5.3 kWh                  |
| Nominal Voltage                         | 51.2 Vdc                 |
| Operation Voltage                       | 46.5 ~ 58.4 Vdc          |
| Power (kW)                              | 5.3 (Peak 11 kW)         |
| Max. Number of Battery in Parallel (LV) | 15                       |
| Max. Number of Battery in Series (HV)   | 16 (with HV Box)         |
| Installation                            | Wall Mounted / Stackable |

## Product Features

- Wall, floor or stack mounted structure.
- Advanced dual voltage application.
- Built-in Wi-Fi & Bluetooth.
- Real-time balancing.
- Flexibility of low voltage and high voltage application scenarios.
- Versatile installation.
- 10 years warranty/7000 cycles.

# 02

**Home Energy  
Storage Inverters  
And All In One Systems.**



# 5KO SMART

The Ultimate All In One by WeCo



*5-6-8kW  
Single Phase*

*5-6-8-10kW  
Split Phase*



## 5KO AIO

**Safety**

4 layers System protection,  
All-round BMS protection

**Reliable**

LFP battery, UL9540A: IP 65 rated design

**Scalable**

Scalable from 5kWh to 60kWh, support  
parallel installation & capacity expansion

**Quick installation**

Modular stackable design with  
plug&play rapid connector

**More useable energy**

Online monitoring APP  
local commission APP web portal

**User-friendly**

100% DOD with pack level energy  
optimization, easy capacity expansion

**WECO**

XT FOR US  
XTE FOR EU



# XT/XTE-SERIES

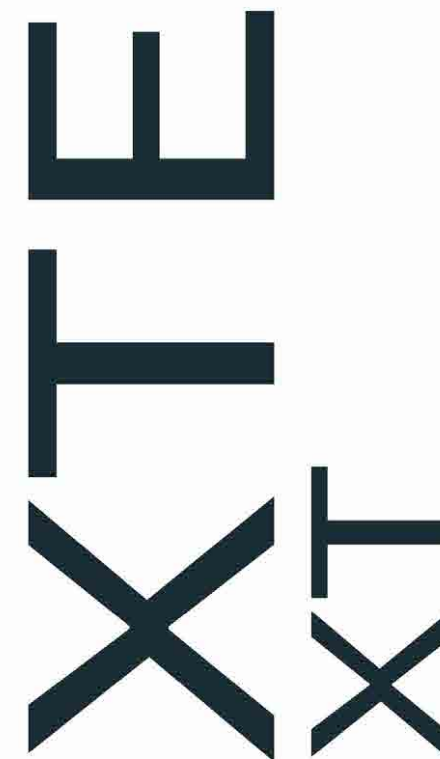
SINGLE-PHASE HYBRID INVERTER  
6-8-10kW



| Model                   | XT 6K                          | XT 8K | XT 10K                           | XT 6K | XT 8K | XT 10K |
|-------------------------|--------------------------------|-------|----------------------------------|-------|-------|--------|
| Inverter Power          | 6kW                            | 8kW   | 10kW                             | 6kW   | 8kW   | 10kW   |
| PV Power                | 9kW                            | 12kW  | 15kW                             | 9kW   | 12kW  | 15kW   |
| PV max Voltage          | 530V                           |       |                                  | 500V  |       |        |
| PV input Current        | 16A                            |       |                                  |       |       |        |
| AC output               | 170-240Vac -50Hz               |       | 120V 120/208V 120/240V 220V 60Hz |       |       |        |
| EPS Output              | Full Power dual Channel Output |       |                                  |       |       |        |
| Overload                | 150%                           |       |                                  |       |       |        |
| Battery Input           | 42-58.4V                       |       |                                  |       |       |        |
| On/Off Grid switch Time | 8ms                            |       |                                  |       |       |        |
| Weight                  | 41 kg                          |       |                                  |       |       |        |
| Dimensions              | 430x225x710 mm                 |       |                                  |       |       |        |
| IP rating               | IP65/ NEMA 3R                  |       |                                  |       |       |        |



With its rugged design and the robust power electronic hardware, XT/XTE series has limitless configurations. XT/XTE can support parallel configurations either single/split phase and three phase. The Grid bypass hardware function ensure uninterruptible power even in case of an inverter blackout.



## Product Features

- Up to 10 in parallel.
- ON/OFF Grid application.
- Generator input and remote control.
- EPS full power.
- 150% overload power.
- Generate and grid at the same time.
- Grid bypass function.
- IP65 Protection (NEMA 3R).

# ESY-SERIES

SINGLE-PHASE LOW VOLTAGE INVERTER  
5-6-8 kW



| Model                   | ESY 5K            | ESY 6K | ESY 8K |
|-------------------------|-------------------|--------|--------|
| Inverter Power          | 6kW               | 8kW    | 10kW   |
| PV Power                | 9kW               | 12kW   | 15kW   |
| PV max Voltage          | 650V              |        |        |
| PV input Current        | 16A               |        |        |
| AC output               | 170-240Vac -50Hz  |        |        |
| EPS Output              | Full Power Output |        |        |
| Overload                | 150%              |        |        |
| Battery Input           | 42-58.4V          |        |        |
| On/Off Grid switch Time | 8ms               |        |        |
| Weight                  | 18 kg             |        |        |
| Dimensions              | 450x212x474 mm    |        |        |
| IP rating               | IP65/ NEMA 3R     |        |        |



ESY Series is compact and lightweight, easy to use and install.

- ESY-SERIES Hybrid Inverter

ESY

## Product Features

Very compact and lightweight.

Remote and local settings via NooR and WeCo Smart APP.

Up to 110A charging /Discharging current.

High overload capacity.

98.5% efficiency.

# H-ESY-SERIES

THREE-PHASE HYBRID INVERTER  
HIGH VOLTAGE  
6/8/10/12/15kW



| Model                   | ESY 6K            | ESY 8K | ESY 10K | ESY 12K | ESY 15K |
|-------------------------|-------------------|--------|---------|---------|---------|
| Inverter Power          | 6kW               | 8kW    | 10kW    | 12kW    | 15kW    |
| PV Power                | 9kW               | 12kW   | 15kW    | 18kW    | 21kW    |
| PV max Voltage          | 750V              |        |         |         |         |
| PV input Current        | 16A               |        |         |         |         |
| AC output               | 380-410Vac 50Hz   |        |         |         |         |
| EPS Output              | Full Power Output |        |         |         |         |
| Overload                | 150%              |        |         |         |         |
| Battery Input           | 750V max          |        |         |         |         |
| On/Off Grid switch Time | 10ms              |        |         |         |         |
| Weight                  | 30kg              |        | 32kg    |         | 34kg    |
| Dimensions              | 530x220x560mm     |        |         |         |         |
| IP rating               | IP65/ NEMA 3R     |        |         |         |         |



H-ESY Series provides 6~15 kW three-phase AC energy storage for households. In case of power outage, it provides full power UPS backup and supports 100% unbalanced load in off-grid conditions.

- H-ESY Three-Phase Hybrid Inverter

# H-ESY

## Product Features

Up to 6 parallel.

10ms on/off grid transfer time.

100% phase unbalance load.

40A battery charge/discharge current.

# OR

## Industrial and Commercial Solutions.

Reliable & Limitless.



# HYBO SERIES TL PCS

HYBO TL PCS from 120 to 300kW

Transformerless Version



## PCS

-120kW  
-180kW  
-240kW  
-300kW

### Product Features

- Modular design.
- Flexible capacity configuration.
- Support six battery clusters per cabinet.
- High reliability.
- Generator input control.
- Cloud platform access, app and web management.

|                                    | PCS 120                           | PCS 180 | PCS 240 | PCS 300 |
|------------------------------------|-----------------------------------|---------|---------|---------|
| <b>Max. Chrg / Dschrg Power</b>    | 120 kW                            | 180 kW  | 240 kW  | 300 kW  |
| <b>Max. Efficiency</b>             | 97.5%                             |         |         |         |
| <b>Max. Battery Voltage</b>        | 934 V                             |         |         |         |
| <b>Battery Input Channels</b>      | 4                                 | 4       | 4       | 6       |
| <b>Working Temperature</b>         | -20°C ~ 55°C (over 45°C derating) |         |         |         |
| <b>Weight</b>                      | 340 Kg                            | 430 Kg  | 590 Kg  | 680 Kg  |
| <b>Dimensions (W × D × H) (mm)</b> | 850 × 1150 × 2200                 |         |         |         |
| <b>Communication Interfaces</b>    | RS485, CAN, Wi-Fi (SUNSPEC)       |         |         |         |

**WECO**



# HYBO SERIES TL PCS

HYBO TL HYBRID from 120 to 240kW

Transformerless Version

Double Door

Single Door

WECCO

WECCO

-120kW  
-180kW  
-240kW

HYBO Hybrid is equipped with multiple MPPT ports for PV energy storage charging



## Product Features

- On-grid/off-grid transformerless hybrid inverter.
- From 1 to 8 MPPT - with direct MC inputs.
- 140% solar oversizing input.
- 10X scalability (parallel operation).
- Generator start stop and stand-by auto logic based on predictive load algorithm.
- Multi-redundant DC bus design, supports single AC and DC module failure.
- Supports half-wave load and shock load.

**WECCO**

# K-Series Air-Cooled Outdoor Cabinet

214kWh 15S 14K3  
241kWh 16S 16K0



14K3 Battery



14K3 and 16K0  
new design

## Product Features

- Rugged design, high power density.
- External Wi-Fi module automatically connects to HYBO host cloud platform.
- Designed for outdoor.
- Each cluster is independently connected to the cloud platform for fine monitoring and management.

|  | K-Cabinet 214/1000Vdc | K-Cabinet 240/1000Vdc |
|--|-----------------------|-----------------------|
| Battery Type                               | 14K3 280Ah            | 16K0 314Ah            |
| Number of batteries per cabinet ( Min Max) | 9-17                  |                       |
| HV BOX Max Voltage                         | 1000V/315A            | 1000V/400A            |
| Battery Voltage range                      | 46.5~57.6Vdc          |                       |
| IP rating                                  | IP65                  |                       |
| Outside Operating Temperatures             | 0°C - 50°C            |                       |
| Design Life                                | 15Y                   |                       |



# K-Series + Hybrid Inverter for Indoor

IP20 Series  
214kWh/240kWh



## Product Features

- Flexible configuration.
- Available as IP20 for indoor applications and IP65 with integrated A/C system
- Devices and battery cabinets are independently connected to the cloud platform for fine monitoring and management of the devices.

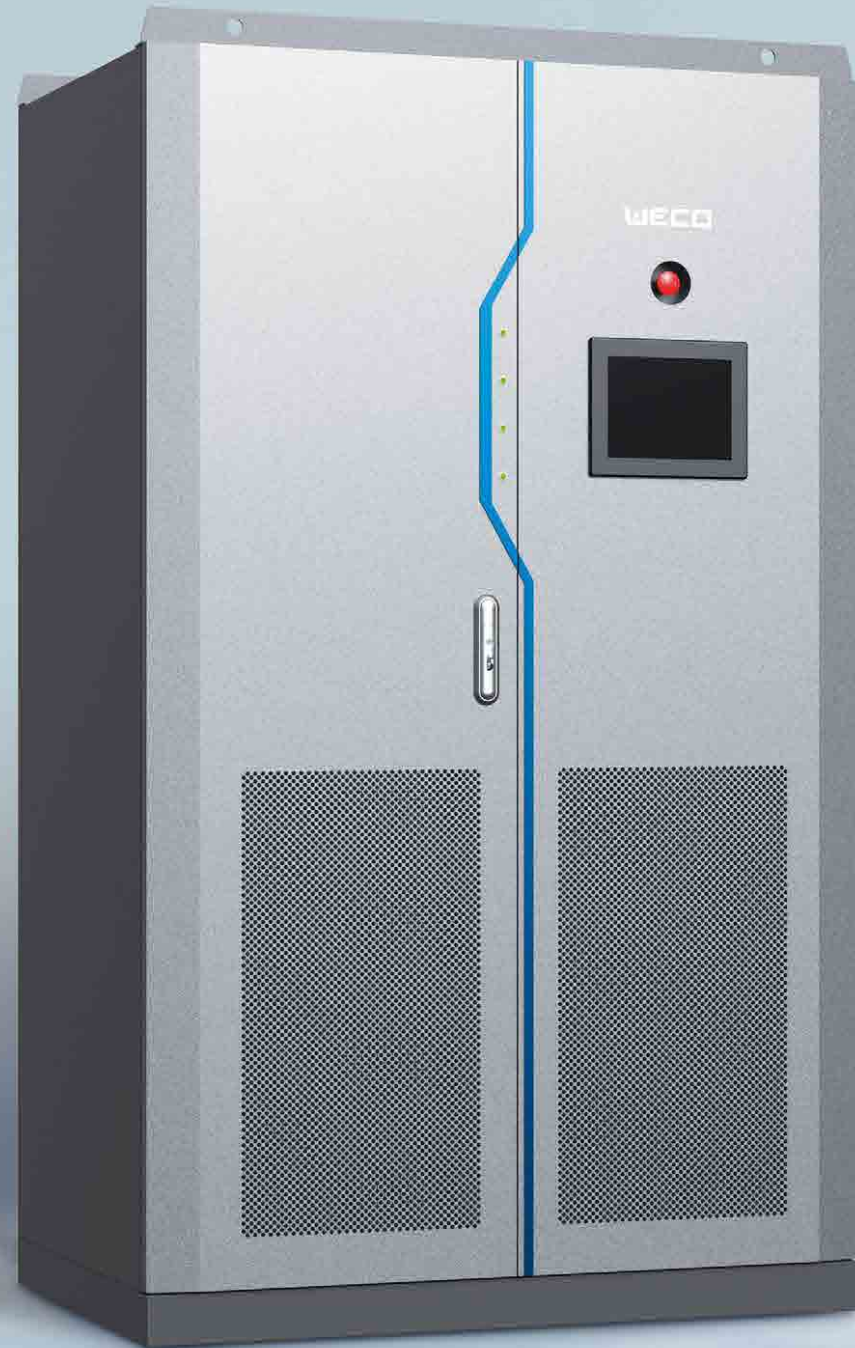


Adaptable to many  
Hybrid Inverter or PCS

# HYBO TS PCS

Rugged PCS for on / off grid applications

Built-In Transformer



**PCS**

-100kW  
-150kW  
-250kW  
-500kW

## Product Features

- Rugged design.
- Built-in transformer.
- Seamless on/off grid switch time.
- Up to 4 HYBO TS in parallel with full EPS power output.
- Full remote management via cloud system.
- 100-150-250-500 kW.

| Model                        | TS100             | TS150 | TS250                       | TS500 |
|------------------------------|-------------------|-------|-----------------------------|-------|
| PCS Power                    | 100kW             | 150kW | 250kW                       | 500kW |
| AC output                    | Europe 400V/50Hz  |       | North America 440/480V 60Hz |       |
| EPS Output                   | Full Power Output |       |                             |       |
| Overload                     | 150%              |       |                             |       |
| Battery Input<br>( max /min) | 650-850Vdc        |       |                             |       |
| On/Off Grid<br>switch Time   | Seamless          |       |                             |       |
| IP rating                    | IP20 Indoor       |       |                             |       |

**WECO**

# HYBO CS HYBRID

Rugged PCS for on / off grid applications

Built-In Transformer



## Product Features

- Rugged design.
- Built-in transformer.
- Seamless on/off grid switch time.
- Up to 4 HYBO CS in parallel with full EPS power output.
- Full remote management via cloud system.
- HYBO CS is an HYBRID inverter designed for off-grid areas or where the grid is unreliable. Can be used a Grid Forming source for microgrids.
- The MMPT power can be scaled up to 600 kWp.

| Model                     | CS100             | CS150 | CS250                       | CS500 |
|---------------------------|-------------------|-------|-----------------------------|-------|
| PCS Power                 | 100kW             | 150kW | 250kW                       | 500kW |
| AC output                 | Europe 400V/50Hz  |       | North America 440/480V 60Hz |       |
| EPS Output                | Full Power Output |       |                             |       |
| Overload                  | 150%              |       |                             |       |
| PV Power                  | 120               | 180   | 300                         | 600   |
| PV Voltage                | Max 650Vdc        |       |                             |       |
| Battery Input ( max /min) | 650-850Vdc        |       |                             |       |
| On/Off Grid switch Time   | seamless          |       |                             |       |
| IP rating                 | IP20 Indoor       |       |                             |       |



Typical  
Configuration of  
WeCo HYBO CS  
Series

214kWh  
Battery Cabinet



HYBO CS 100kW



# Liquid-Cooled Outdoor Cabinet

Energy Storage Cabinet  
258 & 372kWh  
1000 & 1500VDC



## Product Features

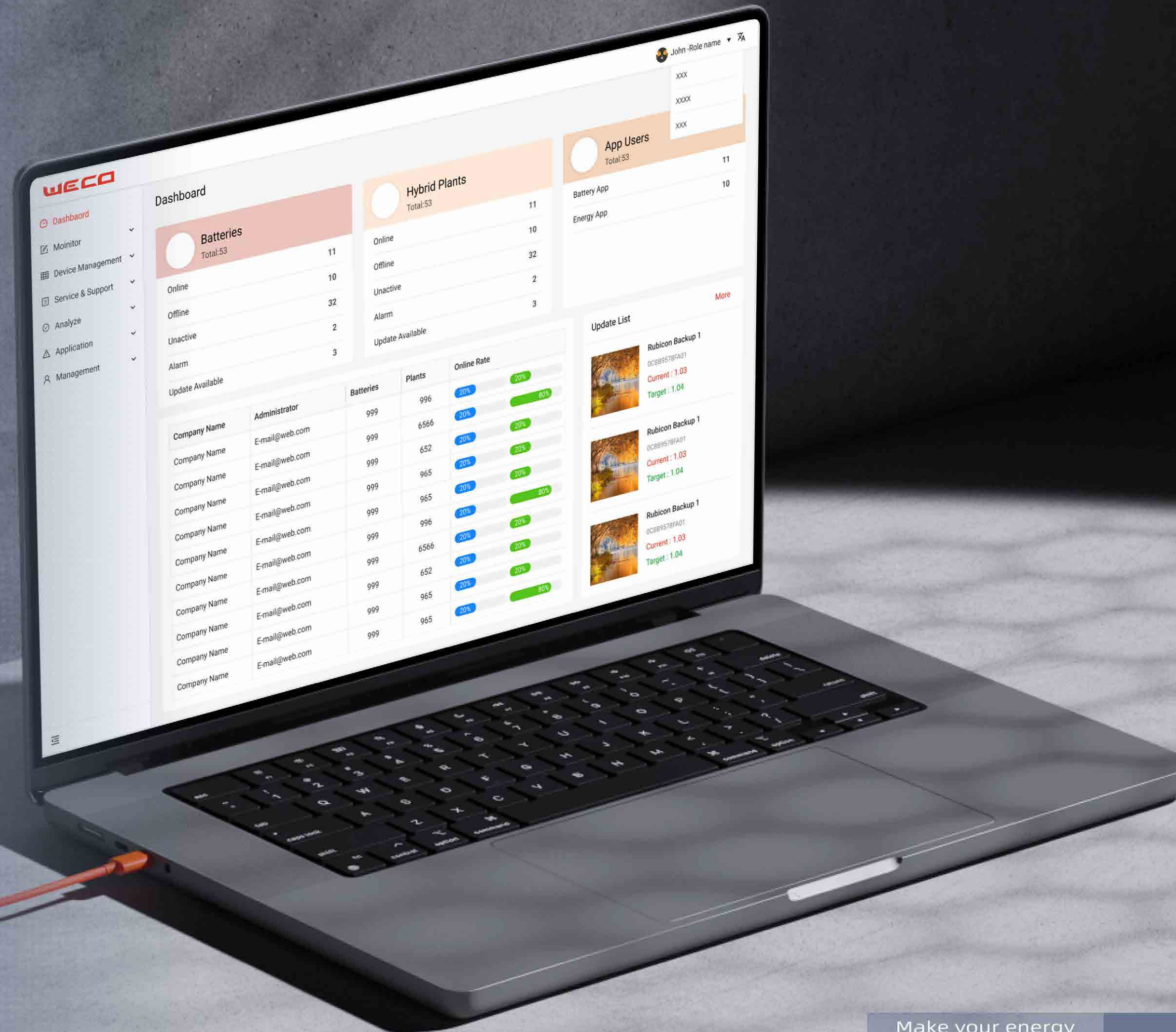
- **Safety:**  
Liquid-cooled modular technology, intelligent leakage detection and replenishment system.
- **Intelligent:**  
Balancing capability and active temperature control ensure maximization of system efficiency and improve ROI.
- **Low-Cost:**  
1500V system integration to reduce hardware costs.
- **High efficiency:**  
High Voltage liquid-cooled modules individual monitoring to enhance safety and efficiency.
- **Modular design:**  
Parallel, convenient system expansion, plug and play.

|                                    | Cabinet      | Cabinet      |
|------------------------------------|--------------|--------------|
| Number of Pack                     | 8 packs      | 8 packs      |
| Battery System Configuration       | 1P416S       | 1P288S       |
| Battery System Capacity            | 372.7 kWh    | 258.048 kWh  |
| Weight                             | 4000 kg      | 3100kg       |
|                                    | Battery Pack | Battery Pack |
| Battery Pack Configuration         | 1P52S        | 1P36S        |
| Pack Capacity                      | 46.59 kWh    | 32.26kWh     |
| Weight                             | 355 kg       | 225 kg       |
| Max. Constant Chrg / Dschr Current | 160 A        | 160 A        |

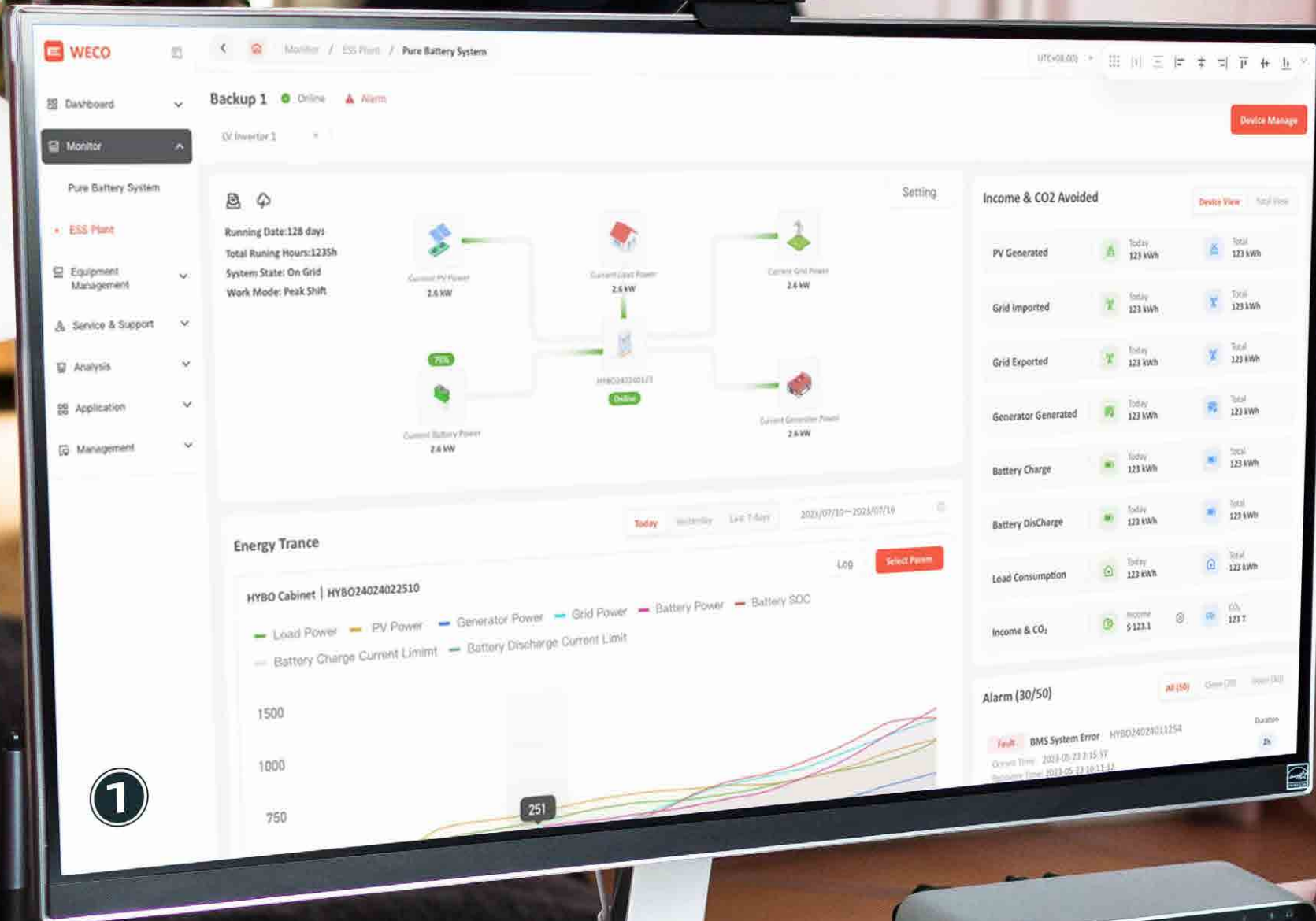
**WECCO**

# Cloud Services.

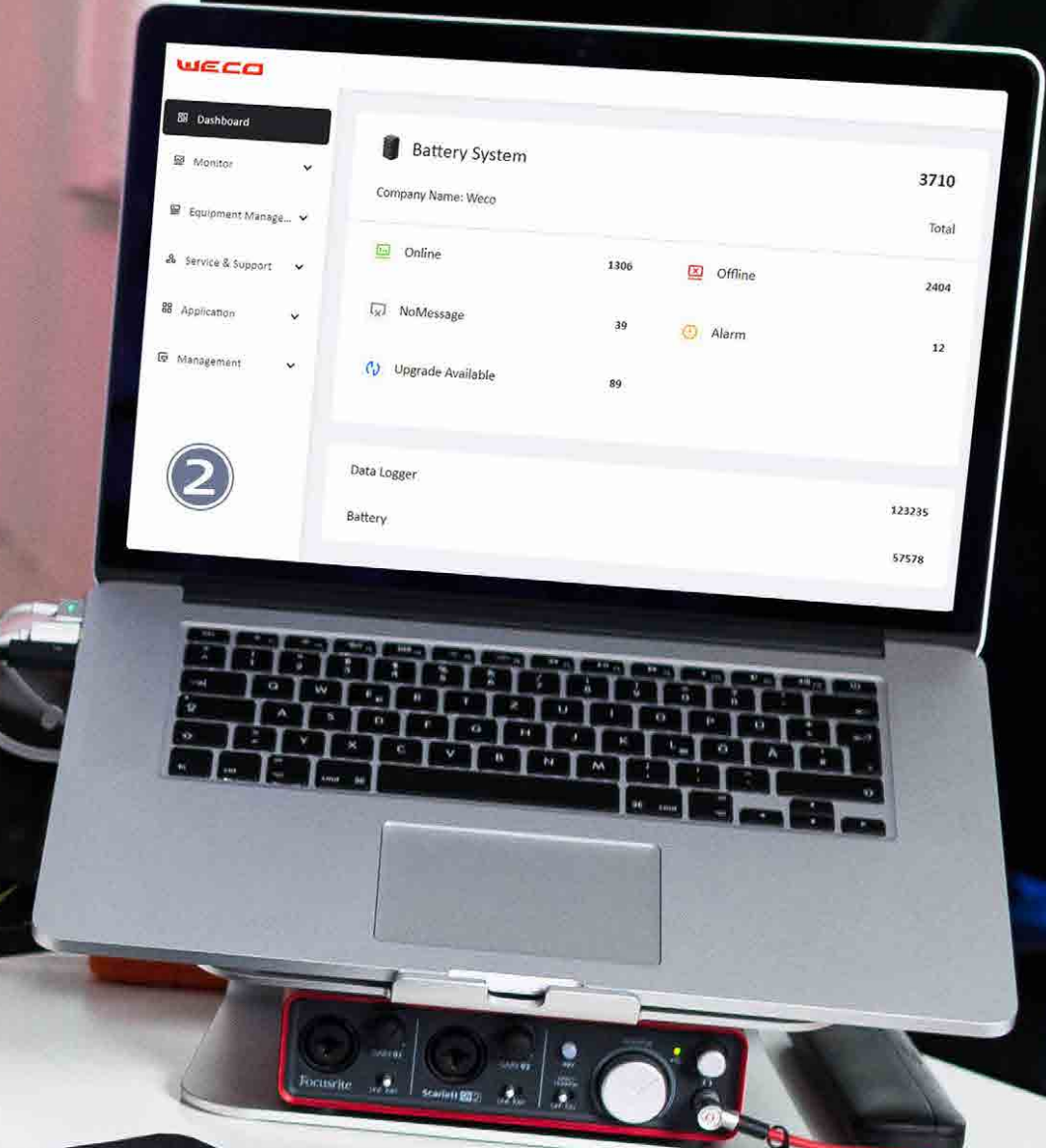
Control your investment,  
protect your systems.







1

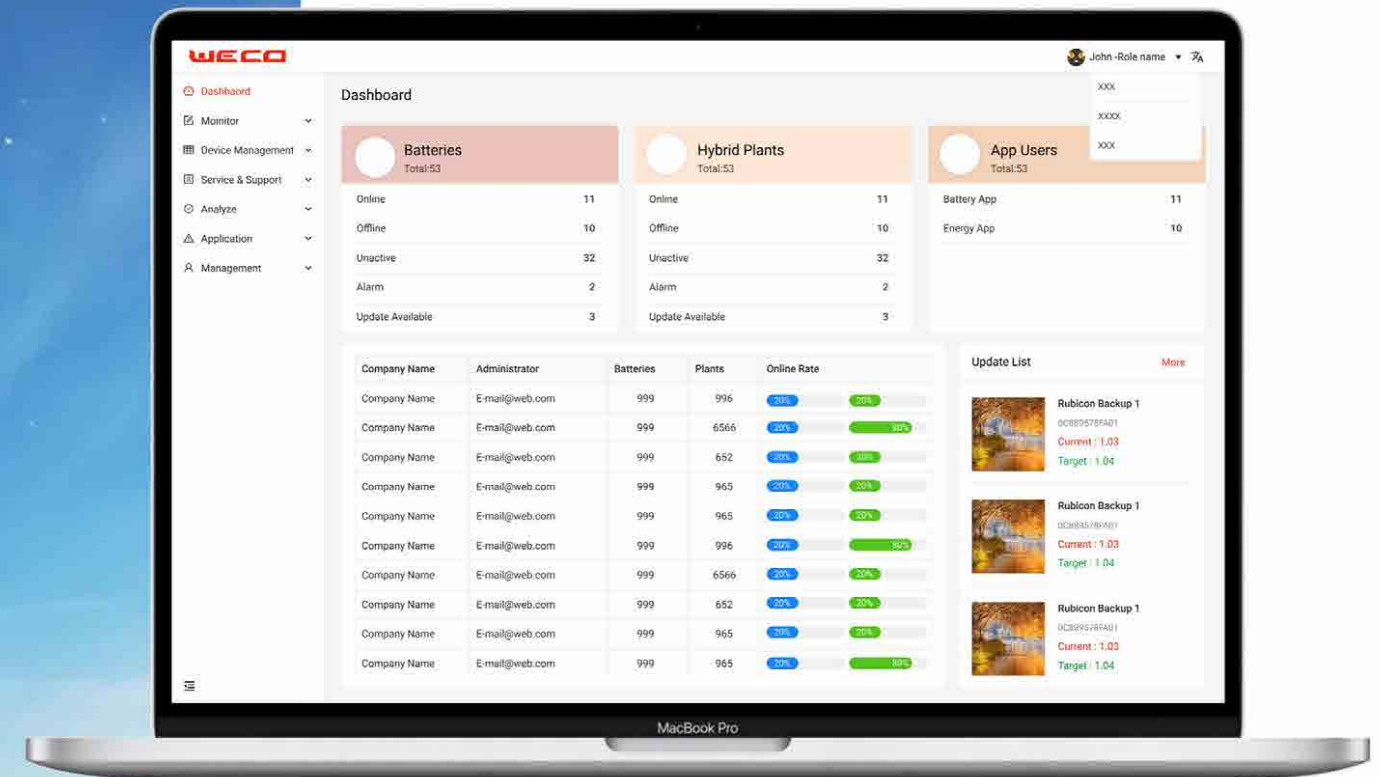


2

# Functions of The Cloud Platform Functionalities

Cloud platform monitors the connected devices at a high frequency to fully control any aspect of your plant.

Through the cloud platform, users can remotely control and upgrade multiple devices at the same time.

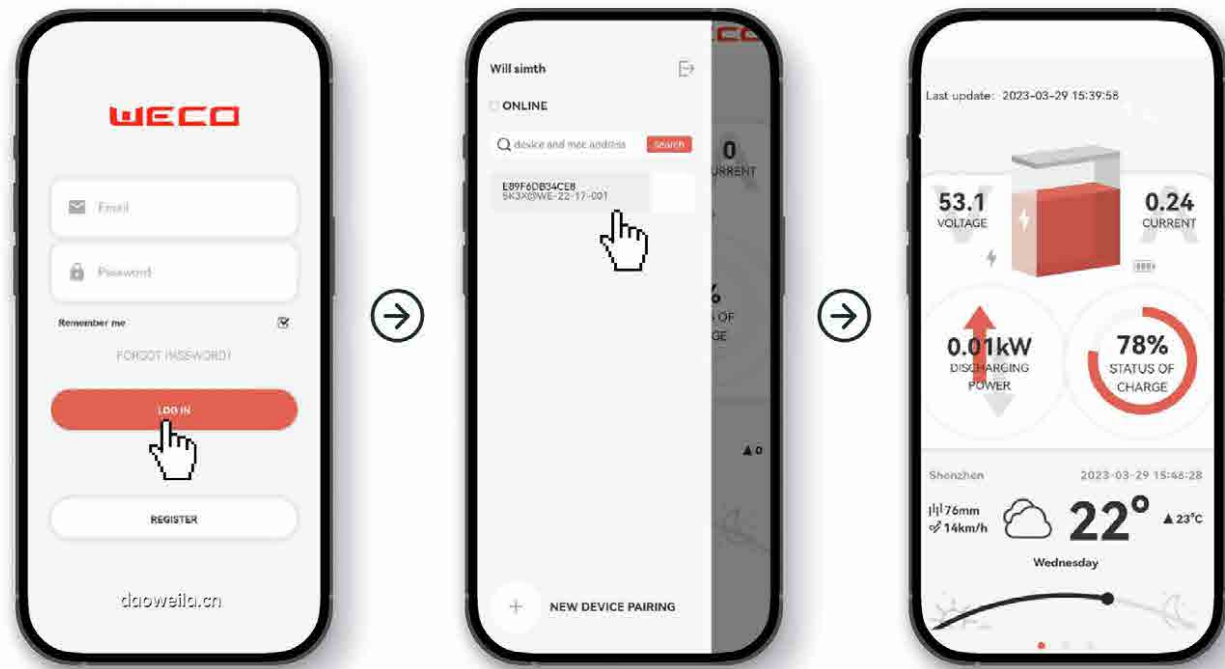


- Our databases are located in Sydney and Frankfurt.
- The monitoring platform complies with GDPR (EU) and SGS guidelines.
- All data transmitted to the cloud is encrypted to comply with SSL and AES standards and the European IoT encryption standard.

It is characterised by:

- Online statistics.
- Remote parameter set up.
- Remote upgrade.
- Automatic maintenance warning and reporting.
- Reduced operation and maintenance expenses.

# WeCo WiFi APP



# Noor APP



Android wifi



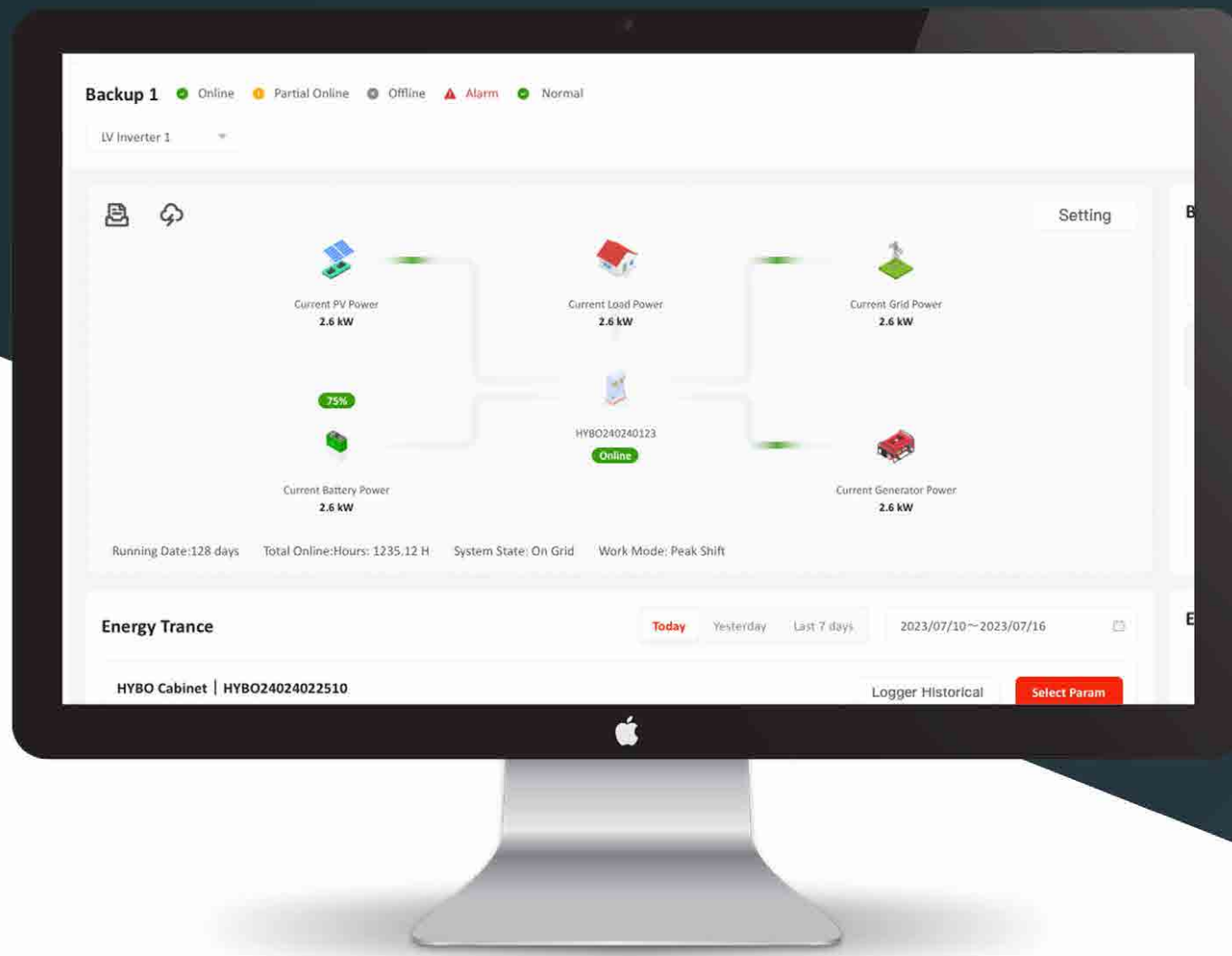
Apple wifi

WeCo Wifi is an APP specifically designed to connect to WeCo batteries.



Noor APP is available for all WeCo energy storage systems.

# Web and cloud platform for enterprises



Detailed but concise design,  
powerful and user friendly!

WeCo is committed to offering a punctual and efficient after-sales service.

To improve this service, we provide a web platform where our professional operator customers can interact with their systems and check the operating status without leaving the office.

The technical support function allows you to interact with the WeCo technical support centre directly from the web portal for the specific system for which assistance is required.

One step ahead from normal monitoring systems.



05

## Why choose us?

### **Digital Smart BMS:**

WeCo has developed one of the most advanced BMS with a real-time control on every single cell.

### **Connected everywhere:**

The WeCo Wi-Fi monitoring system is able to detect, control and monitor every battery pack connected.

### **Italian Quality & Design:**

Design and quality in every detail, first-class assistance worldwide from our skilled technicians.

### **Worldwide First-Class Assistance**

Provide you with efficient and convenient service.



Quality Is Our  
Company  
Philosophy

## **ABOUT US.**

### Locations:

Italy-Florence  
China-Dongguan  
Australia-Sidney  
UAE-Dubai  
USA-New York

### After Sale Service:

English, Italian, Spanish,  
French, Chinese, Arabic

# **Italia Firenze**